

Self Clinch

Product Brochure

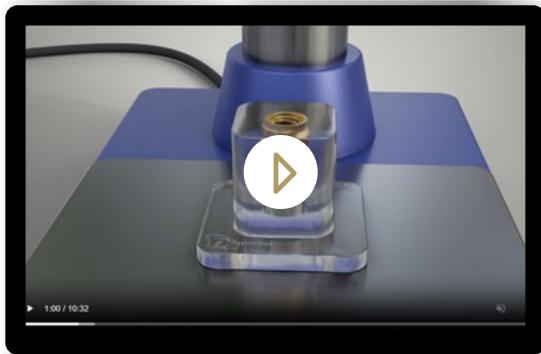


part of the Trifast plc Group




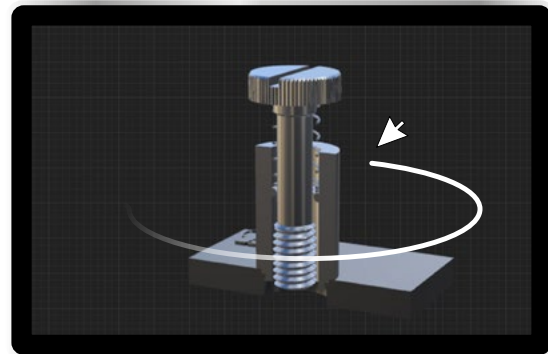


 The TR Media Library



Explore TR Fastenings' media library for a comprehensive understanding of our wide range of fastening products and manufacturing processes. Access videos and resources tailored for engineers, designers and specifiers.

 3D Product Visualisers

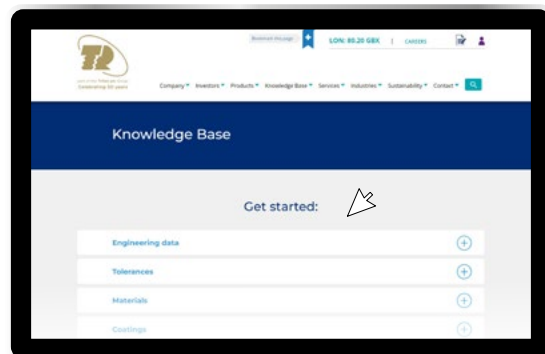


TR's Product Visualisers assist companies at the design stage. A range of options enables the user to interact with the products in a variety of ways such as assemblies, cutaways, magnification, material types and installation. It's intuitive, clear and a great training tool too!

 Technical support services



 TR Knowledge Base



Scan QR codes for more information



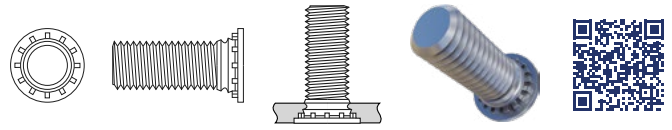
Self Clinch Studs	4-5	Self Clinch Standoffs	8-9
Flush Head Stud TR-FH/TR-FHS/TR-FHA/TR-FH4		Blind Standoff TR-BSO/TR-BSOS/TR-BSOA/TR-BSO4	
Concealed Head Stud for 1.6mm Sheet TR-CHC/TR-CHA		Through Standoff TR-SO/TR-SOS/TR-SOA/TR-SO4	
Concealed Head Stud for 2.4mm Sheet TR-CFHC/TR-CFHA		Concealed Head Standoff for 1.6mm Sheet TR-CSS	
Heavy Duty Stud TR-HFH/TR-HFHS		Concealed Head Standoff for 2.4mm Sheet TR-CSOS	
Low Displacement Stud TR-FHL/TR-FHLS		Hole Slide Standoff TR-SKC	
Broaching Stud TR-KFH		Close To Edge Standoff TR-DSO/TR-DSOS	
Thin Sheet Stud TR-TFH/TR-TFHS		Grounding Standoff TR-SOSG/ TR-SOAG	
Heavy Duty Thin Sheet Stud TR-HFE		Clip-on Standoff TR-SSS/TR-SSC/TR-SSA	
		Broaching Through Hole Standoff TR-KFE/TR-KFSE	
Self Clinch Nuts	6-7	Broaching Threaded Standoff TR-KFE/TR-KFSE	
Standard Nut TR-S/TR-CLS/TR-CLA/TR-SP4/TR-SP2		Thin Sheet Standoff TR-TSO/TR-TSOS	
Flush Nut TR-F/TR-F4		Clear Hole Standoff TR-SO	
Blind Nut TR-B/TR-BS		Micro Standoff TR-MSO4	
Broaching Nut TR-KF2/TR-KFS2			
Non-Locking Floating Nut TR-AS/TR-AC		Self Clinch Panel Fasteners	10
Locking Floating Nut TR-LAS/TR-LAC		Slotted Panel Fastener TR-PFS2/TR-PFC2	
Locking Nut TR-LK/TR-LKS		Cross Recess Panel Fastener TR-PFC2P	
Nylon Lock Nut TR-PL/TR-PLC		Low Profile Panel Fastener TR-PF30/TR-PF31/TR-PF32	
Non-Locking Mini Squeezed Nut TR-U/TR-FEX/TR-FEOX		Pin Panel Fastener TR-PTL2	
Self-Locking Mini Squeezed Nut TR-UL/TR-FE/TR-FEO		Captive Panel Screw TR-PF11	
Thin Sheet Nut TR-SMPS		Captive Panel Screw TR-PFHV	
Nylon Broaching Nut TR-CFN		Low Profile Cross Recess Panel Fastener TR-PF50	
Thread Lock Feature Nut TR-SL			
Non-Locking H Nut TR-H		Self Clinch Pins	11
		Flush Head Pin TR-TP/TR-TPS/TR-TP4	
		Terminal Pin TR-TER	
		Self Clinch Cable Tie Mounts	11
		Cable Tie Mount TR-TD	

Self Clinch Studs



Flush Head Stud TR-FH/TR-FHS/TR-FHA/TR-FH4

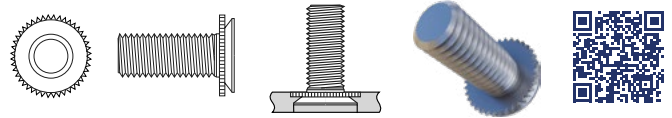
Category:	Self Clinch Fastener
Product:	Stud
Type:	Flush Head
Material:	Steel (TR-FH), Stainless Steel (TR-FHS), Aluminium (TR-FHA), 400 Stainless Steel (TR-FH4)
Thread:	M2, M2.5, M3, M4, M5, M6, M8



www.trfastenings.com/TR00028536

Concealed Head Stud for 1.6mm Sheet TR-CHC/TR-CHA

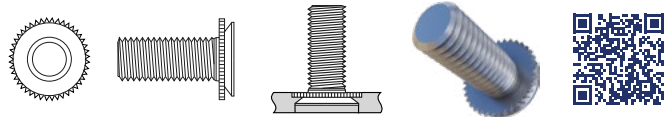
Category:	Self Clinch Fastener
Product:	Stud
Type:	Concealed Head
Material:	Stainless Steel (TR-CHC), Aluminium (TR-CHA)
Thread:	M3, M4, M5



www.trfastenings.com/TR00028454

Concealed Head Stud for 2.4mm Sheet TR-CFHC/TR-CFHA

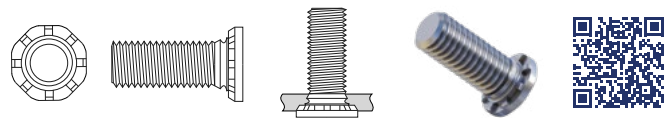
Category:	Self Clinch Fastener
Product:	Stud
Type:	Concealed Head
Material:	Stainless Steel (TR-CFHC), Aluminium (TR-CFHA)
Thread:	M3, M4, M5



www.trfastenings.com/TR00028495

Heavy Duty Stud TR-HFH/TR-HFHS

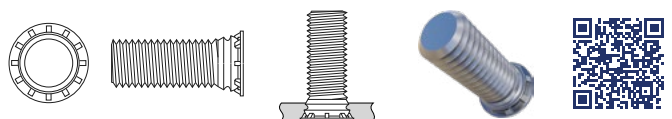
Category:	Self Clinch Fastener
Product:	Stud
Type:	Heavy Duty
Material:	Steel (TR-HFH), Stainless Steel (TR-HFHS)
Thread:	M5, M6, M8, M10



www.trfastenings.com/TR00029165

Low Displacement Stud TR-FHL/TR-FHLS

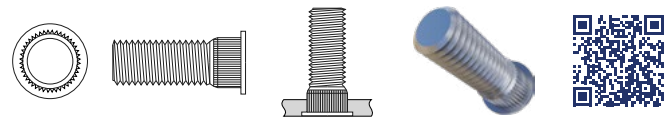
Category:	Self Clinch Fastener
Product:	Stud
Type:	Low Displacement
Material:	Steel (TR-FHL), Stainless Steel (TR-FHLS)
Thread:	M2.5, M3, M4, M5



www.trfastenings.com/TR00029270

Broaching Stud TR-KFH

Category:	Self Clinch Fastener
Product:	Stud
Type:	Broaching
Material:	Phosphor Bronze (TR-KFH)
Thread:	M2.5, M3, M4, M5



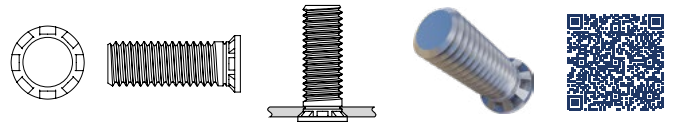
www.trfastenings.com/TR00028436

Self Clinch Studs



Thin Sheet Stud TR-TFH/TR-TFHS

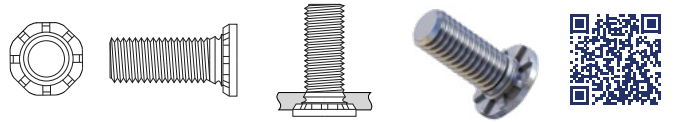
Category:	Self Clinch Fastener
Product:	Stud
Type:	Thin Sheet
Material:	Steel (TR-TFH), Stainless Steel (TR-TFHS)
Thread:	M3, M4, M5



www.trfastenings.com/TRO0029427

Heavy Duty Thin Sheet Stud TR-HFE

Category:	Self Clinch Fastener
Product:	Stud
Type:	Heavy Duty Thin Sheet
Material:	Steel (TR-HFE)
Thread:	M5, M6, M8



www.trfastenings.com/TRO0038778





Standard Nut TR-S/TR-CLS/TR-CLA/TR-SP4/TR-SP2

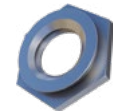
Category:	Self Clinch Fastener
Product:	Nut
Type:	Nut
Material:	Steel (TR-S), Stainless Steel (TR-CLS), Aluminium (TR-CLA), 400 Stainless Steel (TR-SP4), A286 Stainless Steel (TR-SP2)
Thread:	M2, M2.5, M3, M3.5, M3 Alt, M4, M5, M6, M8, M10, M12



www.trfastenings.com/TR00029909

Flush Nut TR-F/TR-F4

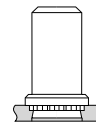
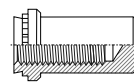
Category:	Self Clinch Fastener
Product:	Nut
Type:	Flush
Material:	Stainless Steel (TR-F), 400 Series Stainless Steel (TR-F4)
Thread:	M2, M2.5, M3, M3.5, M3 Alt, M4, M5, M6



www.trfastenings.com/TR00029891

Blind Nut TR-B/TR-BS

Category:	Self Clinch Fastener
Product:	Nut
Type:	Blind
Material:	Steel (TR-B), Stainless Steel (TR-BS)
Thread:	M3, M4, M5, M6



www.trfastenings.com/TR00029825

Broaching Nut TR-KF2/TR-KFS2

Category:	Self Clinch Fastener
Product:	Nut
Type:	Broaching
Material:	Steel (TR-KF2), Stainless Steel (TR-KFS2)
Thread:	M2, M2.5, M3, M3.5, M4, M5



www.trfastenings.com/TR00029861

Non-Locking Floating Nut TR-AS/TR-AC

Category:	Self Clinch Fastener
Product:	Nut
Type:	Non-Locking Floating
Material:	Steel (TR-AS), 303 Stainless Steel (TR-AC)
Thread:	M3, M4, M5, M6



www.trfastenings.com/TR00026768

Locking Floating Nut TR-LAS/TR-LAC

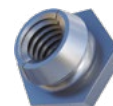
Category:	Self Clinch Fastener
Product:	Nut
Type:	Locking Floating Nut
Material:	Steel (TR-LAS), 303 Stainless Steel (TR-LAC)
Thread:	M3, M4, M5, M6



www.trfastenings.com/TR00026731

Locking Nut TR-LK/TR-LKS

Category:	Self Clinch Fastener
Product:	Nut
Type:	Locking Nut
Material:	Steel (TR-LK), Stainless Steel (TR-LKS)
Thread:	M2.5, M3, M4, M5

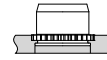


www.trfastenings.com/TR00030200



Nylon Lock Nut TR-PL/TR-PLC

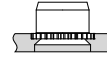
Category: Self Clinch Fastener
 Product: Nut
 Type: Nylon Lock
 Material: Steel (TR-PL), Stainless Steel (TR-PLC)
 Thread: M3, M4, M5



www.trfastenings.com/TR00030217

Non-Locking Mini Squeezed Nut TR-U/TR-FEX/TR-FEOX

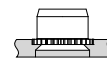
Category: Self Clinch Fastener
 Product: Nut
 Type: Non-Locking Mini Squeezed
 Material: Stainless Steel (TR-U/TR-FEX/TR-FEOX)
 Thread: M2, M3, M4, M5, M6



www.trfastenings.com/TR00030224

Self-Locking Mini Squeezed Nut TR-UL/TR-FE/TR-FEO

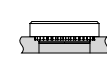
Category: Self Clinch Fastener
 Product: Nut
 Type: Self-Locking Mini Squeezed
 Material: Stainless Steel (TR-UL/TR-FE/TR-FEO)
 Thread: M2, M3, M4, M5, M6



www.trfastenings.com/TR00030233

Thin Sheet Nut TR-SMPS

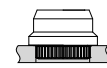
Category: Self Clinch Fastener
 Product: Nut
 Type: Thin Sheet
 Material: 300 Series Stainless Steel (TR-SMPS)
 Thread: M2.5, M3, M3.5



www.trfastenings.com/TR00039596

Nylon Broaching Nut TR-CFN

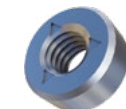
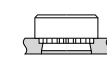
Category: Self Clinch Fastener
 Product: Nut
 Type: Nylon Broaching
 Material: Steel (TR-CFN)
 Thread: M3



www.trfastenings.com/TR00044323

Thread Lock Feature Nut TR-SL

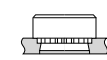
Category: Self Clinch Fastener
 Product: Nut
 Type: Thread Lock Feature
 Material: Steel (TR-SL)
 Thread: M3, M3.5, M4, M5, M6, M8



www.trfastenings.com/TR00044325

Non-Locking H Nut TR-H

Category: Self Clinch Fastener
 Product: Nut
 Type: Non-Locking H
 Material: Steel (TR-H)
 Thread: M10

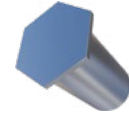
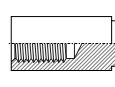


www.trfastenings.com/TR00039594



Blind Standoff TR-BSO/TR-BSOS/TR-BSOA/TR-BSO4

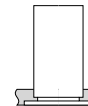
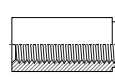
Category:	Self Clinch Fastener
Product:	Standoff
Type:	Blind Nut
Material:	Steel (TR-BSO), Stainless Steel (TR-BSOS), Aluminium (TR-BSOA), 400 Stainless Steel (TR-BSO4)
Thread:	M2.5, M3, M3 Alt, M4, M5



www.trfastenings.com/TR00026983

Through Standoff TR-SO/TR-SOS/TR-SOA/TR-SO4

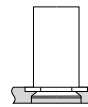
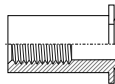
Category:	Self Clinch Fastener
Product:	Standoff
Type:	Through
Material:	Steel (TR-SO), Stainless Steel (TR-SOS), Aluminium (TR-SOA), 400 Stainless Steel (TR-SO4)
Thread:	M2, M2.5, M3, M3 Alt, M4, M5



www.trfastenings.com/TR00027907

Concealed Head Standoff for 1.6mm Sheet TR-CSS

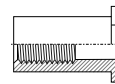
Category:	Self Clinch Fastener
Product:	Standoff
Type:	Concealed Head for 1.6mm Sheet
Material:	Stainless Steel (TR-CSS)
Thread:	M3, M4, M5



www.trfastenings.com/TR00027804

Concealed Head Standoff for 2.4mm Sheet TR-CSOS

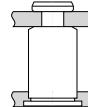
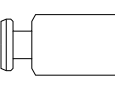
Category:	Self Clinch Fastener
Product:	Standoff
Type:	Concealed Head for 2.4mm min. Sheet
Material:	Stainless Steel (TR-CSOS)
Thread:	M3, M4, M5, M6



www.trfastenings.com/TR00027822

Hole Slide Standoff TR-SKC

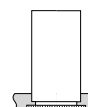
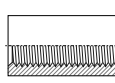
Category:	Self Clinch Fastener
Product:	Standoff
Type:	Hole Slide
Material:	Stainless Steel (TR-SKC)
Diameter:	5.39mm



www.trfastenings.com/TR00027851

Close To Edge Standoff TR-DSO/TR-DSOS

Category:	Self Clinch Fastener
Product:	Standoff
Type:	Close To Edge
Material:	Steel (TR-DSO), Stainless Steel (TR-DSOS)
Thread:	M3

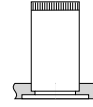
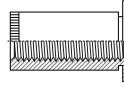


www.trfastenings.com/TR00027898



Grounding Standoff TR-SOSG

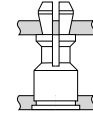
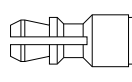
Category: Self Clinch Fastener
 Product: Standoff
 Type: Grounding
 Material: Stainless Steel (TR-SOSG), Aluminium (TR-SOAG)
 Thread: M3, M3 Alt



www.trfastenings.com/TR00027844

Clip-on Standoff TR-SSS/TR-SSC/TR-SSA

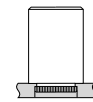
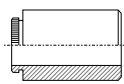
Category: Self Clinch Fastener
 Product: Standoff
 Type: Clip-on
 Material: Steel (TR-SSS), Stainless Steel (TR-SSC), Aluminium (TR-SSA)
 Diameter: 3.6mm, 4.2mm



www.trfastenings.com/TR00028436

Broaching Through Hole Standoff TR-KFE/TR-KFSE

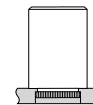
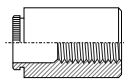
Category: Self Clinch Fastener
 Product: Standoff
 Type: Broaching Through Hole
 Material: Steel (TR-KFE), Stainless Steel (TR-KFSE)
 Diameter: 3.6mm, 4.2mm



www.trfastenings.com/TR00027617

Broaching Threaded Standoff TR-KFE/TR-KFSE

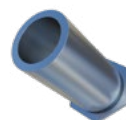
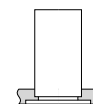
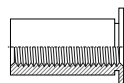
Category: Self Clinch Fastener
 Product: Standoff
 Type: Broaching Threaded
 Material: Steel (TR-KFE), Stainless Steel (TR-KFSE)
 Thread: M3, M4



www.trfastenings.com/TR00027512

Thin Sheet Standoff TR-TSO/TR-TSOS

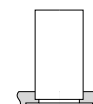
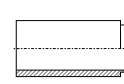
Category: Self Clinch Fastener
 Product: Standoff
 Type: Thin Sheet
 Material: Steel (TR-TSO), Stainless Steel (TR-TSOS)
 Thread: M2.5, M2.5 Alt, M3, M3.5, M3 Alt



www.trfastenings.com/TR00029582

Clear Hole Standoff TR-SO

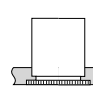
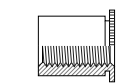
Category: Self Clinch Fastener
 Product: Standoff
 Type: Clear Hole
 Material: Steel (TR-SO)
 Diameter: 4/3.1mm, 6/3.1mm, 6/3.6mm, 8/3.6mm, 8/4.1mm, 8/5.1mm



www.trfastenings.com/TR00038794

Micro Standoff TR-MS04

Category: Self Clinch Fastener
 Product: Standoff
 Type: Micro
 Material: Stainless Steel (TR-MS04)
 Thread: M1, M1.2, M1.4, M1.6, M2

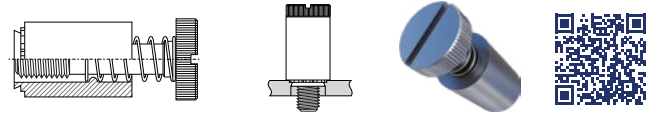


www.trfastenings.com/TR00061918



Slotted Panel Fastener TR-PFS2/TR-PFC2

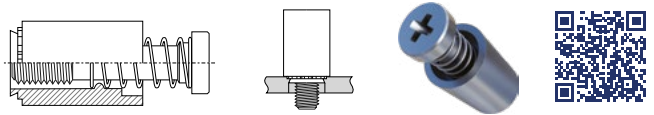
Category:	Self Clinch Fastener
Product:	Panel Fastener
Type:	Slotted
Material:	Steel (TR-PFS2), Stainless Steel (TR-PFC2)
Thread:	M3, M4, M5, M6



www.trfastenings.com/TR00026861

Cross Recess Panel Fastener TR-PFC2P

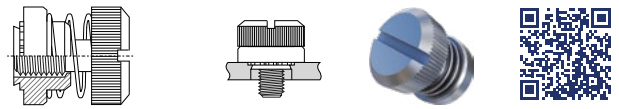
Category:	Self Clinch Fastener
Product:	Panel Fastener
Type:	Cross Recess
Material:	Stainless Steel (TR-PFC2P)
Thread:	M3, M4, M5, M6



www.trfastenings.com/TR00026805

Low Profile Panel Fastener TR-PF30/TR-PF31/TR-PF32

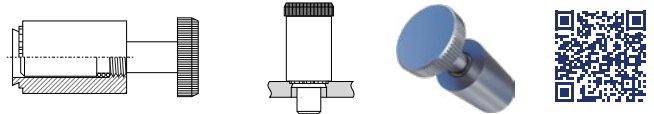
Category:	Self Clinch Fastener
Product:	Panel Fastener
Type:	Low Profile
Material:	Steel (TR-PF30/TR-PF31/TR-PF32)
Thread:	M3, M4, M5, M6



www.trfastenings.com/TR00026834

Pin Panel Fastener TR-PTL2

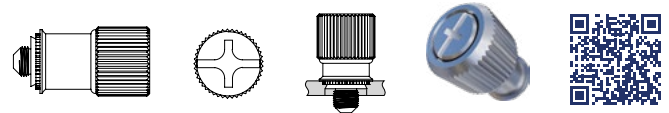
Category:	Self Clinch Fastener
Product:	Panel Fastener
Type:	Pin
Material:	Steel (TR-PTL2)
Dia code:	6.35mm (04)



www.trfastenings.com/TR00026858

Captive Panel Screw TR-PF11

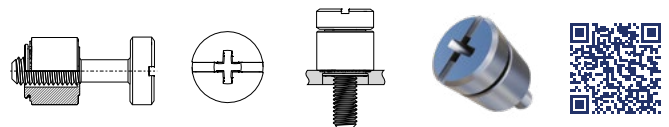
Category:	Self Clinch Fastener
Product:	Panel Fastener
Type:	Captive Screw
Material:	Steel, Aluminium, Stainless Steel (TR-PF11)
Thread:	M3, M4, M5, M6



www.trfastenings.com/TR00029809

Captive Panel Screw TR-PFHV

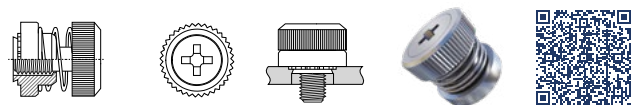
Category:	Self Clinch Fastener
Product:	Panel Fastener
Type:	Captive Screw
Material:	Steel (TR-PFHV)
Thread:	M3, M3.5, M4



www.trfastenings.com/TR00044347

Low Profile Cross Recess Panel Fastener TR-PF50

Category:	Self Clinch Fastener
Product:	Panel Fastener
Type:	Low Profile Cross Recess
Material:	Steel (TR-PF50)
Thread:	M3, M4, M5



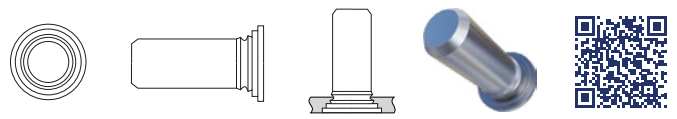
www.trfastenings.com/TR00046710

Self Clinch Pins



Flush Head Pin TR-TP/TR-TPS/TR-TP4

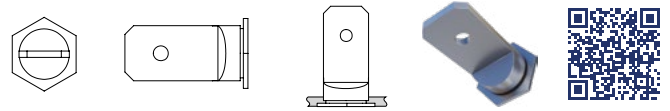
Category:	Self Clinch Fastener
Product:	Pin
Type:	Flush Head
Material:	Steel (TR-TP), Stainless Steel (TR-TPS), 400 Stainless Steel (TR-TP4)
Pin dia:	3mm, 4mm, 5mm, 6mm



www.trfastenings.com/TR00026918

Terminal Pin TR-TER

Category:	Self Clinch Fastener
Product:	Pin
Type:	Terminal Pin
Material:	Steel (TR-TER)
Width:	8mm



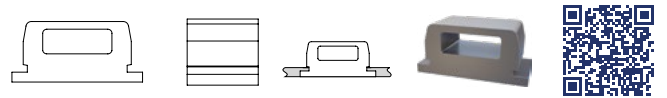
www.trfastenings.com/TR00029823

Self Clinch Cable Tie Mounts

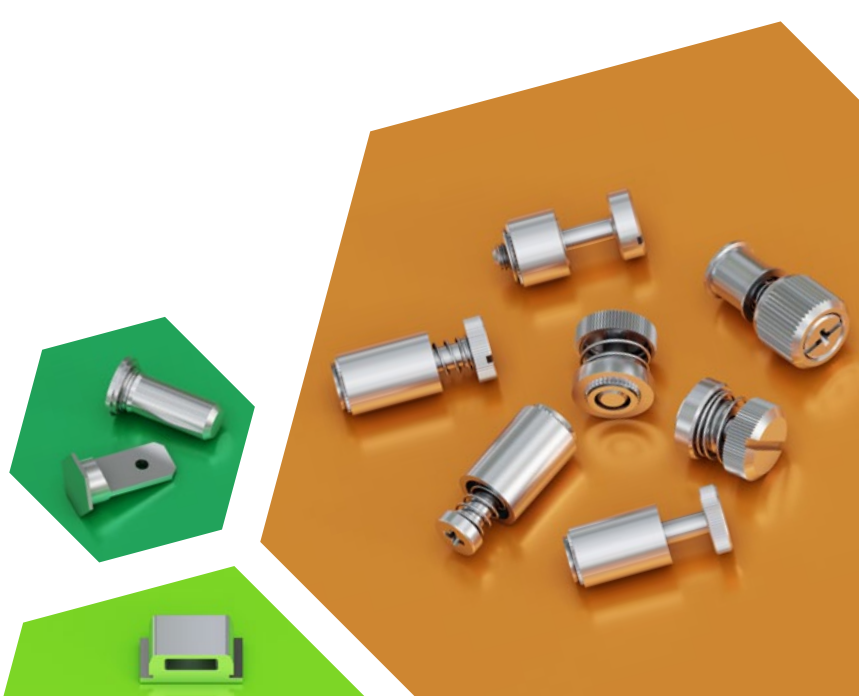


Cable Tie Mount TR-TD

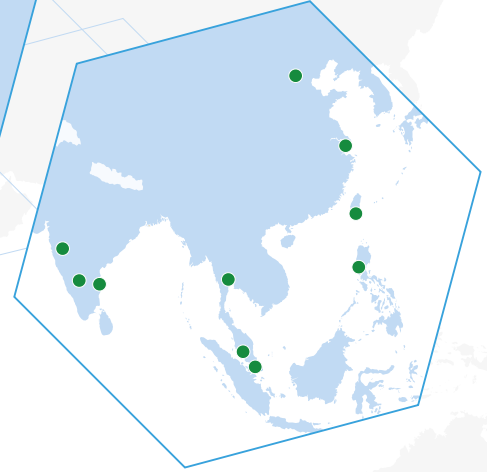
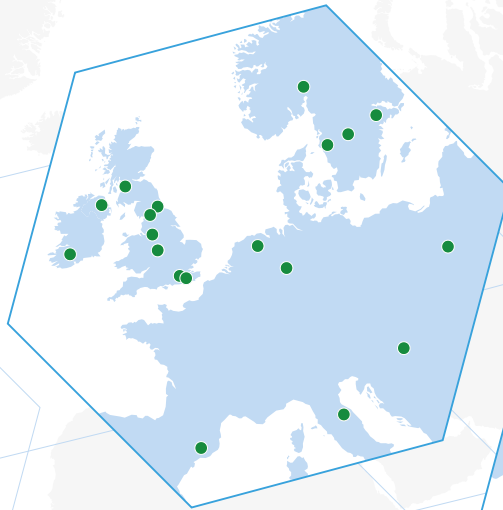
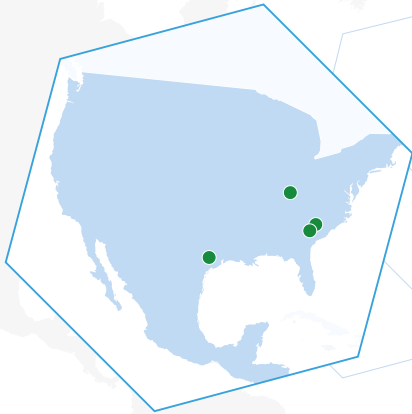
Category:	Self Clinch Fastener
Product:	Mount
Type:	Cable Tie Mount
Material:	Steel (TR-TD)
Size:	TR-TD-40-4, TR-TD-60-6, TR-TD-175-12



www.trfastenings.com/TR00029819



Where we operate



UK

t: +44 (0)8454 811 800
e-mail: uk@trfastenings.com

Ireland

t: +353 (0)22 22301
e-mail: ireland@trfastenings.com

Netherlands

t: +31 (0)541 511515
e-mail: netherlands@trfastenings.com

Norway

t: +47 67 06 70 00
e-mail: norway@trfastenings.com

Sweden

t: +46 (0)8 578 44 900
e-mail: sweden@trfastenings.com

Spain

t: +34 93 647 22 45
e-mail: spain@trfastenings.com

Hungary

t: +36 30 342 1218
e-mail: hungary@trfastenings.com

Poland - Representative

t: +48 (22)402 36 14
e-mail: poland@trfastenings.com

Italy

t: +39 (0)75 9149015
e-mail: info@trvici.it

Germany

t: +49 (0) 5246 . 50320 - 0
e-mail: info@trkuhlmann.com

USA

Houston - t: +1 800-280-2181
Charlotte - t: +1 704-588-4740
e-mail: usa@trfastenings.com

Singapore

t: +65 6759 6033
e-mail: singapore@trfastenings.com

Malaysia

t: +6 (03) 5519 1444
e-mail: psep@psep.com.my

China

t: +86 21 5032 5696
e-mail: china@trfastenings.com

Taiwan

t: +886 7 557 6366
e-mail: taiwan@trfastenings.com

Philippines - Representative Office

t: +63-25768476
e-mail: philippines@trfastenings.com

India

t: +91 (0)44 4280 3932
e-mail: india@trfastenings.com

Thailand

t: +66(0)2 130 6562
e-mail: thailand@trfastenings.com

Japan - Representative

t: +81(0)70 4467 1118
e-mail: japan@trfastenings.com



Technical & innovation centres

Birmingham - UK

t: +44 (0)121 521 0100
e-mail: wednesbury@trfastenings.com
sales@trfastenings.com

Gothenburg - Sweden

t: +46 (0)31 31 760 776
e-mail: sweden@trfastenings.com
www.trfastenings.com

CUICAR - South Carolina USA

t: +1 800 280 2181
e-mail: usa@trfastenings.com
info@trfastenings.com



www.carbonbalancedpaper.com
CBP020810

Master Distributor Details

