

# TENTE Castors



We are pleased to announce the inclusion of a range of TENTE Castors to our product range to enhance the existing suite of sheet metal products

TENTE are a leading global brand for castors, used extensively in many industries including, health and home, energy, tech & infrastructure and general industrial. Produced in high-quality materials such as solid rubber or synthetic compounds, these products are not only designed to be aesthetically pleasing, but have longevity.

Product range	Product features
Swivel Braked Castors	Load capacity from 25kg to 1200kg
Swivel Castors	Tread options: Polyurethane, Polypropylene, Polyamide, Thermoplastic Rubber, Solid Rubber, Elastic Rubber Tread
Fixed Castors	Wheel diameters from 14mm to 200mm
Accessories - Circlip Stems, Stem Plates, Threaded Stems	

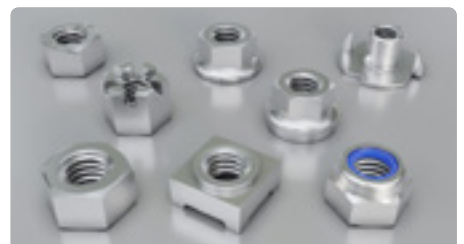
We can also support with a full range of fasteners and components including:



Fasteners for Sheet Metal



Screws & Bolts



Nuts

Contact the team today for more information:

[sales@trfastenings.com](mailto:sales@trfastenings.com)

